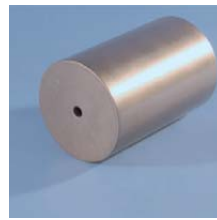


Pictures of components VC-series part 1

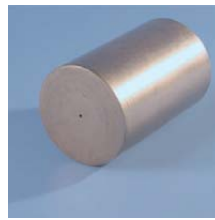
For your information: The 4 digits numbers like C008 or C036 are not INDUTHERM order numbers. They are the drawing position numbers and shall help you to find this article in the assembly drawings and spare parts lists in your manual. INDUTHERM order numbers have 8 digits!



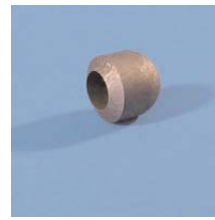
dripping protection
C064



graphite crucible for casting
C008



graphite crucible for granulating
C008



ball for sealing rod
C052



graphite sealing rod
C035



crucible shield
C011



ceramic inlet for special alloys
C065



filling cone
C020



crucible bottom insulation
C022



ceramic sealing rod with tip
C035



ceramic sealing rod for ball
C051



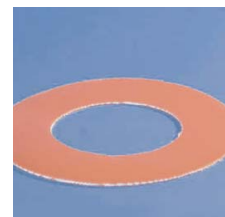
ceramic cover for thermocouple
C034



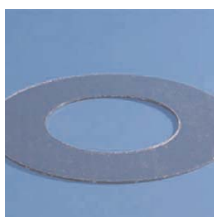
flask with flange and multihole
C085



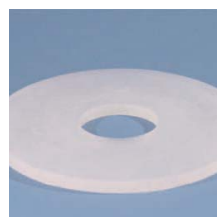
flask without flange and multihole
C085



silicon gasket for flask with flange
C032



graphite gasket for flask with flange
C033



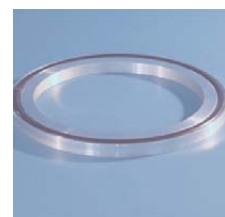
silicon gasket for flask without flange
C086



flask tongs
C059



crucible tongs
C059



flask adapter
C028



rubber sprue base
C121



adhesive for high temperature
C115



lubrication for sealing rod holder
C116



air filter for vacuum pump
C108

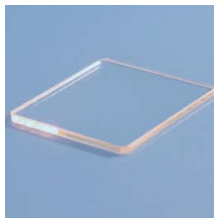


oil separator filter vacuum pump
C109

Please order the spare parts list plus the drawing for *your* machine at RG@indutherm.de
For the correct list, we need to know your machine type and the serial number of your machine.

Pictures of components VC-series part 2

For your information: The 4 digits numbers like C008 or C036 are not INDUTHERM order numbers. They are the drawing position numbers and shall help you to find this article in the assembly drawings and spare parts lists in your manual. INDUTHERM order numbers have 8 digits!



window

C016



sealing rod holder
new type

C017



spring

C090



handle for bell

C021



holder

C091



air filter for bell

C038



steel mould

C123



manometer
inductor housing

C093



manometer
vacuum chamber

C094



sealing
rod cylinder

C096



vacuum filter

C110



o-ring
inductor housing

C019



screw

C037



sensor
for water

C097



GSM modem
for remote service

C106



thermocouple up to 1300°
for wall measurement
pink colour

C036



thermocouple up to 1200°
for center measurement
green colour

C039



thermocouple up to 1700°
for center measurement
grey colour

C039



thermocouple up to 1600°
for wall with 4mm ceramic
orange colour

C071



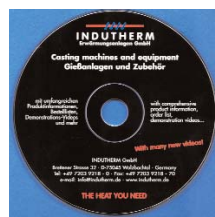
thermocouple up to 1700°
for wall with 4mm ceramic
grey colour

C071



thermocouple for flask
measurement

C101



CD-Rom with Videos

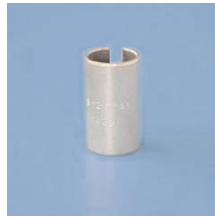
C164

Please order the spare parts list plus the drawing for *your* machine at RG@indutherm.de
For the correct list, we need to know your machine type and the serial number of your machine.

Pictures of components VC-series part 3

For your information: The 4 digits numbers like C008 or C036 are not INDUTHERM order numbers. They are the drawing position numbers and shall help you to find this article in the assembly drawings and spare parts lists in your manual. INDUTHERM order numbers have 8 digits!

For older machines:



clamp for sealing rod

C092



flow meter for
protective gas

C088



panel printer
cartridge

C104